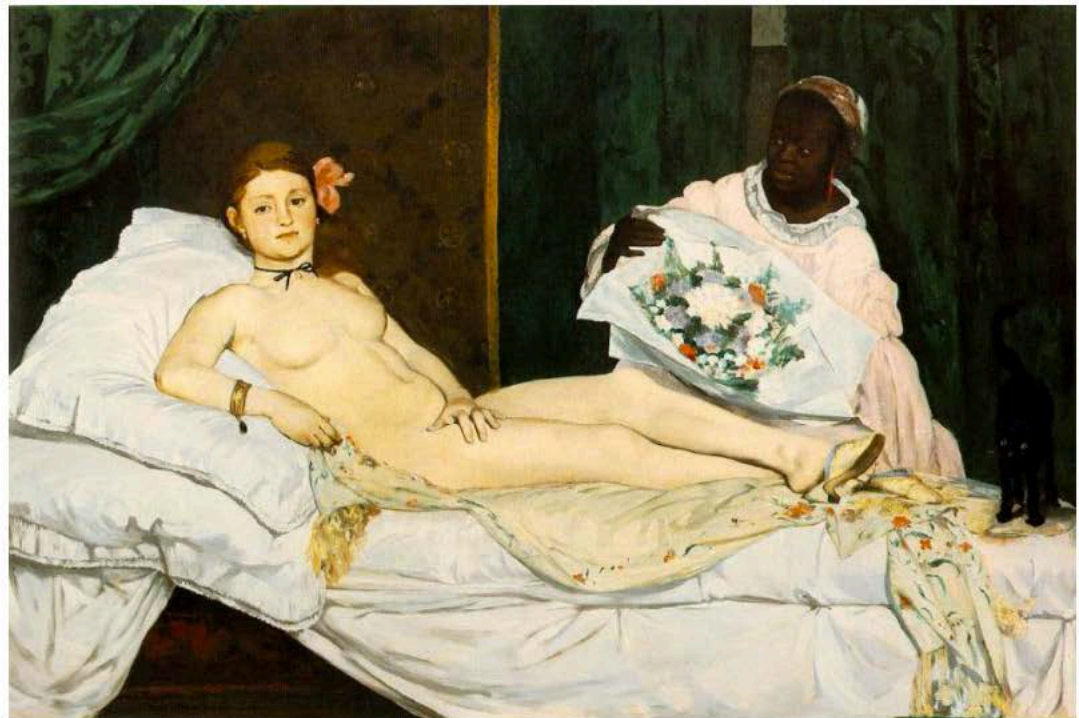
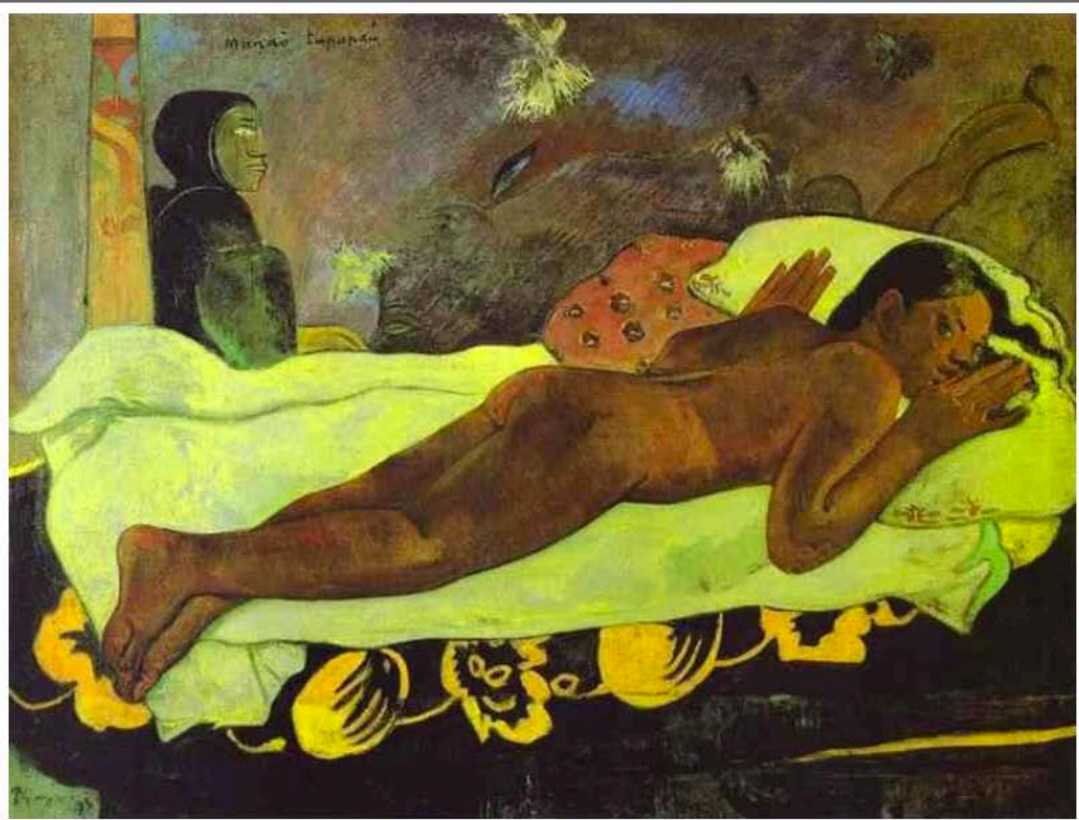


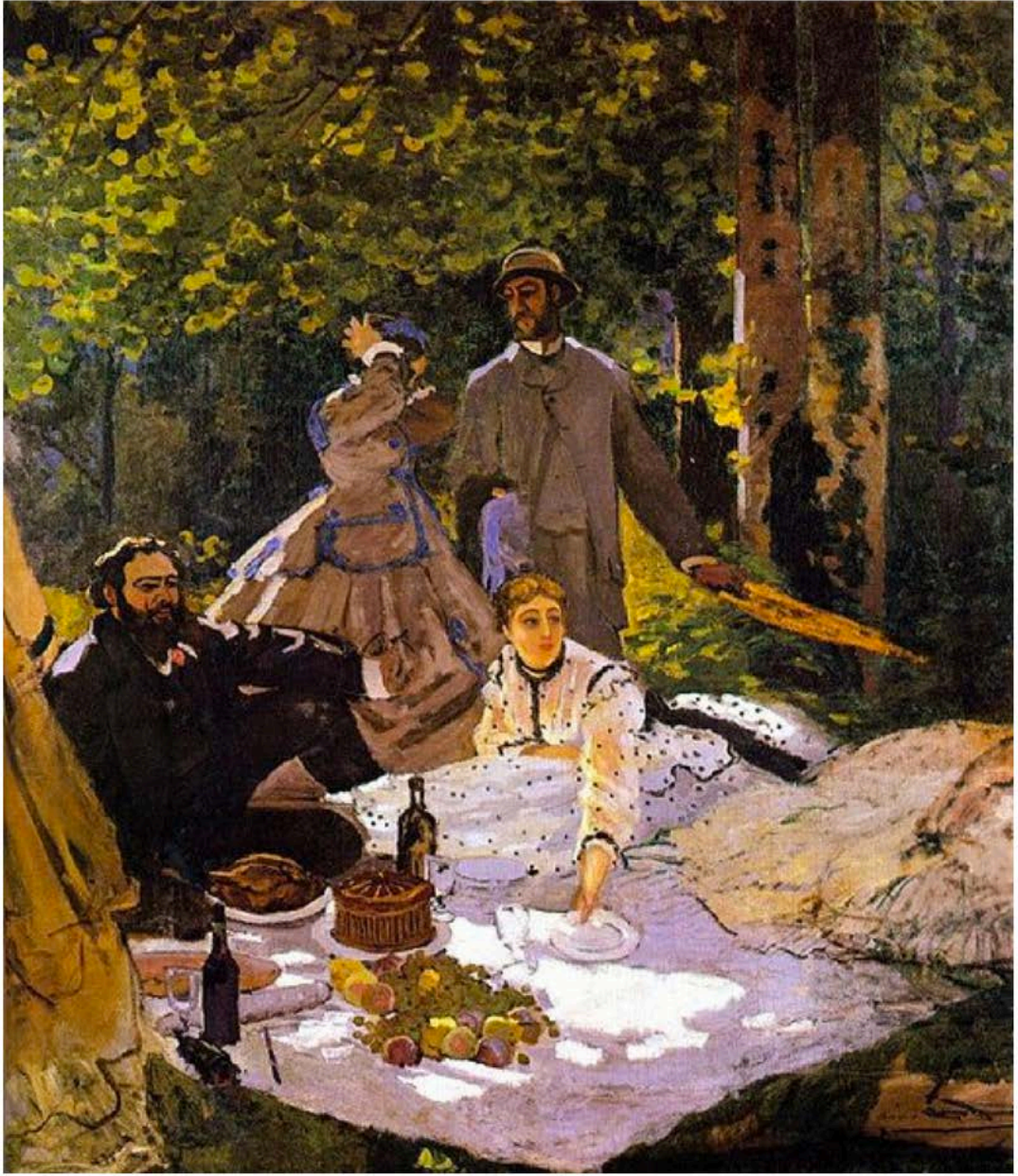
Art Inspired by Art



Paul Gauguin's *Spirit of the Dead Walking*, inspired by Édouard Manet's *Olympia*

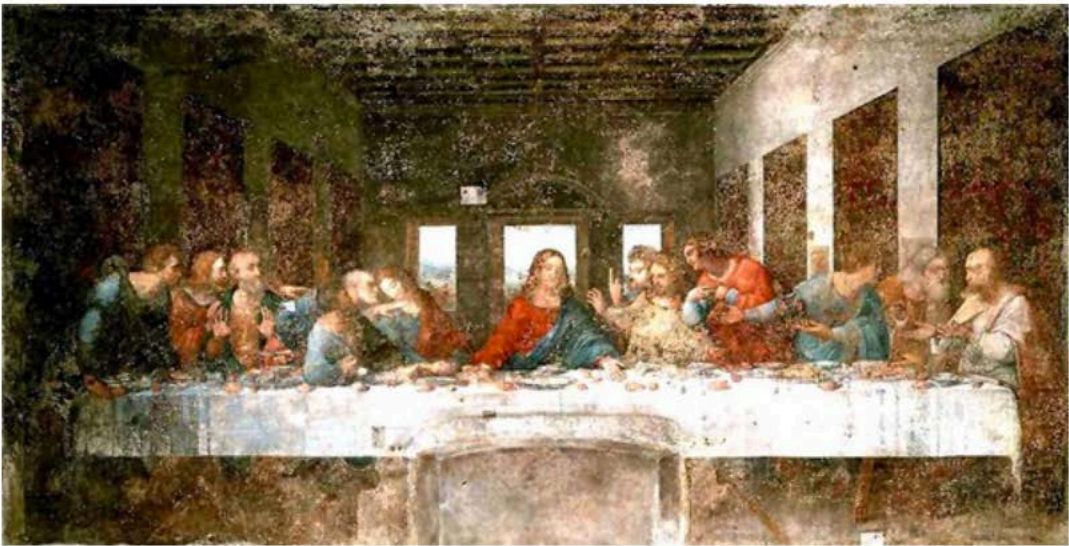


Édouard Manet's *Olympia*, inspired by Titian's *Venus of Urbino*





Colorplate 6. ÉDOUARD MANET. *Déjeuner sur l'herbe*. 1863. 6'9 $\frac{1}{8}$ " \times 8'10 $\frac{1}{4}$ ". The Louvre, Paris



Andy Warhol's *The Last Supper*, inspired by Leonardo da Vinci's *The Last Supper*

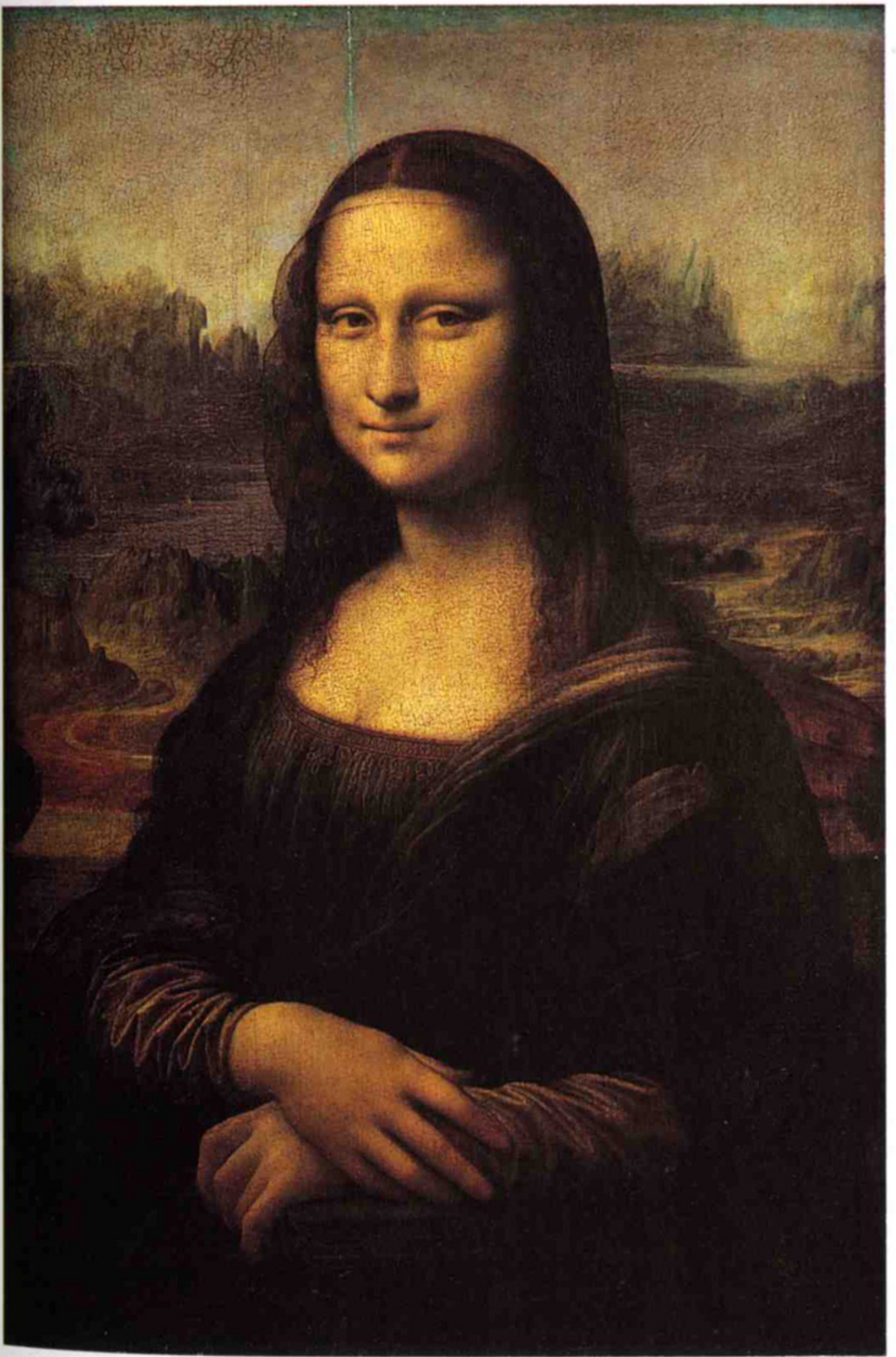


Joan Miró's *The Tilled Field*, inspired by Hieronymus Bosch's *The Garden of Earthly Delights*



Tobias Stengel's *Die Woge*, inspired by Katsukisha

Hokusai's *The Great Wave off Kanagawa*



22-4 LEONARDO DA VINCI, *Mona Lisa*, ca. 1503–1505. Oil on wood, approx. 2' 6" × 1' 9". Louvre, Paris.

mona lisa1



L. H. O. O. Q.

Marcel Duchamp's *L.H.O.O.Q.*, inspired by Leonardo da Vinci's *Mona Lisa*

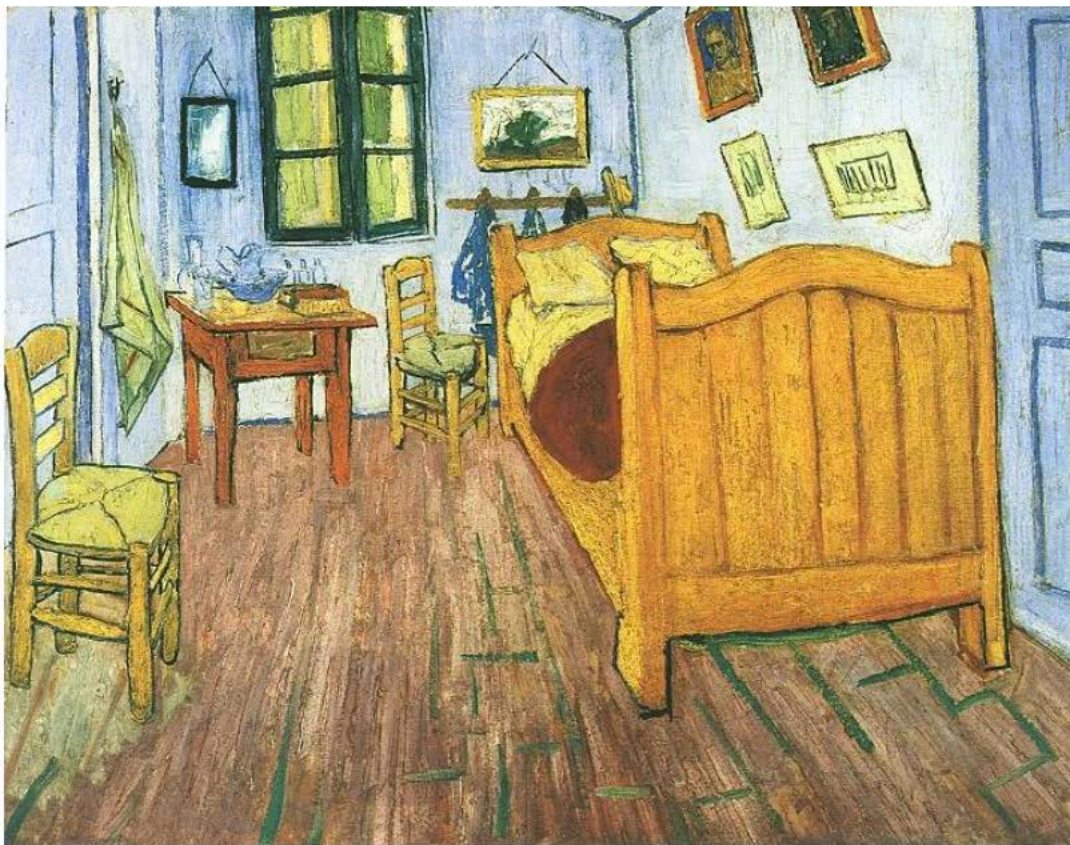
duchamp1



Fountain (After Duchamp) by Sherrie Levine, inspired by Marcel Duchamp's *Fountain*



Elmgreen & Dragset's *Han*, inspired by Edvard Eriksen's *The Little Mermaid*



















Claude Monet's *Le déjeuner sur l'herbe*, inspired by Édouard

Manet's *Le déjeuner sur l'herbe*

Student work



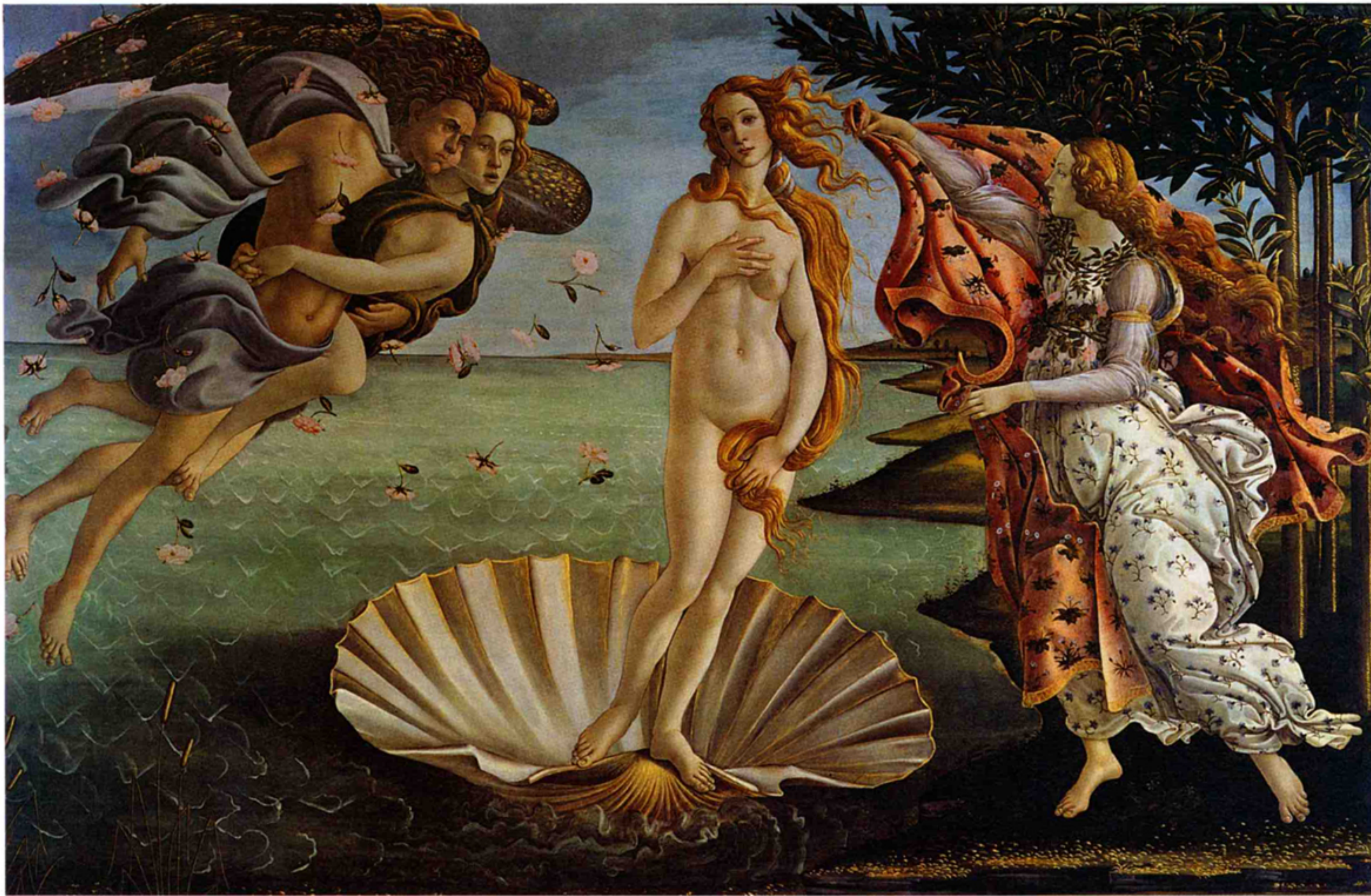
BOIS.



Kathleen Gilje







21-27 SANDRO BOTTICELLI, *Birth of Venus*, ca. 1482. Tempera on canvas, approx. 5' 8" × 9' 1". Galleria degli Uffizi, Florence.

